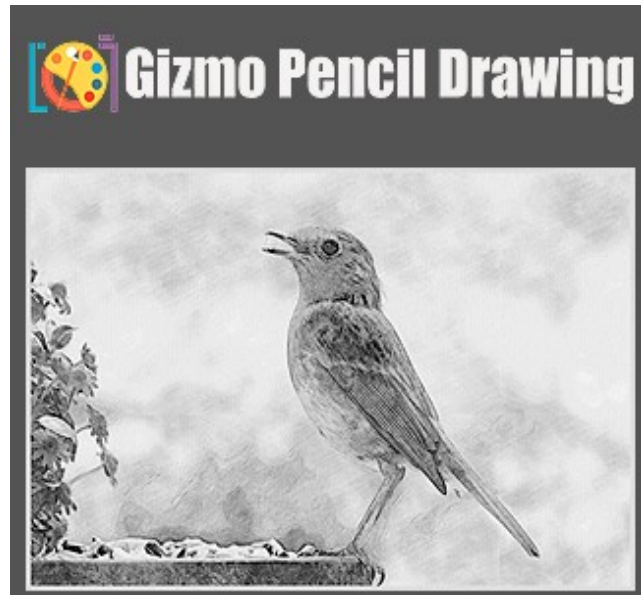


# Gizmo Pencil Drawing Instruction Manual



[Gizmo Pencil Drawing Website:](https://gizmopanel.com/)  
<https://gizmopanel.com/>  
[Support: support@gizmopanel.com](mailto:support@gizmopanel.com)

# Table of Contents

- I. Introduction to Gizmo Pencil Drawing.....4**
- II. Gizmo Pencil Drawing Installation.....4**
  - 1. *System Requirements..... 4*
  - 2. *Installation Instructions..... 4*
  - 3. *Install Required Files... (On Help Tab)..... 5*
    - A. *Load Required Patterns..... 5*
    - B. *Load Required Tool Presets..... 7*
  - 4. *Updating Gizmo Pencil Drawing..... 8*
- III. Overview.....9**
  - 1. *Draw Tab..... 9*
  - 2. *Tools Tab..... 10*
  - 3. *Help Tab..... 11*
- IV. Top Panel.....12**
  - 1. *Spot Healing..... 12*
  - 2. *Patch Tool..... 12*
  - 3. *Image Color Adjustment..... 12*
  - 4. *Tone Adjustment..... 12*
  - 5. *Increase Saturation..... 12*
  - 6. *Recover highlights..... 12*
  - 7. *Recover Shadows..... 12*
- V. Draw Tab.....13**
  - 1. *Pencil Drawing..... 14*
  - 2. *Add Canvas Texture..... 14*
    - A. *Aquarelle | B. Linen | C. Hand Made..... 14*
    - D. *Rough | E. Pressed | F. Washed..... 14*
  - 3. *Canvas Texture Scaling..... 14*
- VI. Tools Tab.....15**
  - 1. *Border Size..... 16*
  - 2. *Border Opacity..... 16*
  - 3. *Select Border Color..... 16*
  - 4. *Select To Add Border... (type)..... 16*
    - A. *Add Frame Border | B. Add Paintbrush Border | C. Add Unfinished Border..... 16*
  - 5. *Color Intensity..... 16*



- 6. *Colorize Drawing*.....16
- VII. Help Tab.....17**
  - 1. *Install Required Files*.....18
    - A. *Load Required Patterns*.....18
    - B. *Load Required Tool Presets*.....19
  - 2. *Updating Gizmo Pencil Drawing*.....20
  - 3. *Featured Plugins*.....21
- VIII. INDEX.....22**
  - 1. *Gizmo Pencil Drawing Version Change Log*.....22
  - 2. *Gizmo Pencil Drawing Frequently Asked Questions (FAQ)*.....22

## I. INTRODUCTION TO GIZMO PENCIL DRAWING

If you are here, you are now experiencing motivation to do more with your photography, better and easier with your Adobe Photoshop skills, and editing abilities. Now with the Gizmo Pencil Drawing Plugin, elevate your artistic vision. With just one click, transform your photos into stunning, lifelike paintings. Unleash your creativity with a variety of brushstrokes, to the simplicity of pencil drawing. Experience the transformative power of Gizmo Pencil Drawing Plugin and take your artwork to the next level.

## II. GIZMO PENCIL DRAWING INSTALLATION

### 1. SYSTEM REQUIREMENTS

Gizmo Pencil Drawing requires the latest version of Adobe Photoshop in order to function properly. The minimum required version of Adobe Photoshop is v23.3.2. If you are using an older version of the software, please upgrade to the latest edition in order to use Gizmo Pencil Drawing.

Gizmo Pencil Drawing plugin will work only with **ENGLISH** version of **Adobe Photoshop**. For instructions on changing your Photoshop language to English please visit following link: <https://helpx.adobe.com/creative-cloud/help/change-install-language.html>

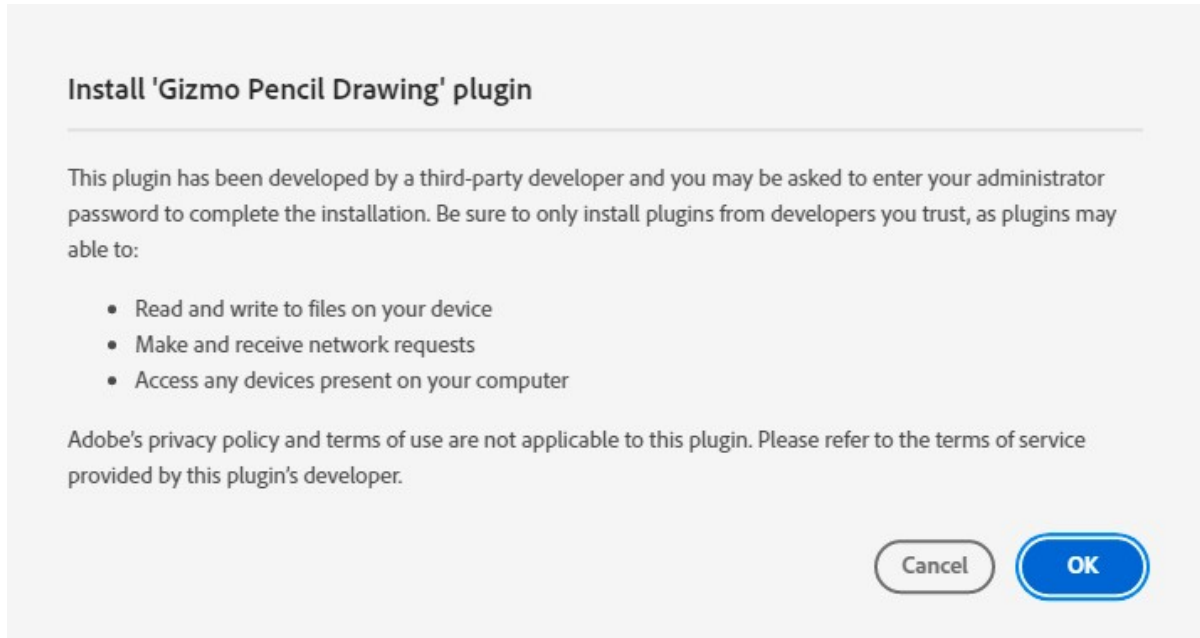
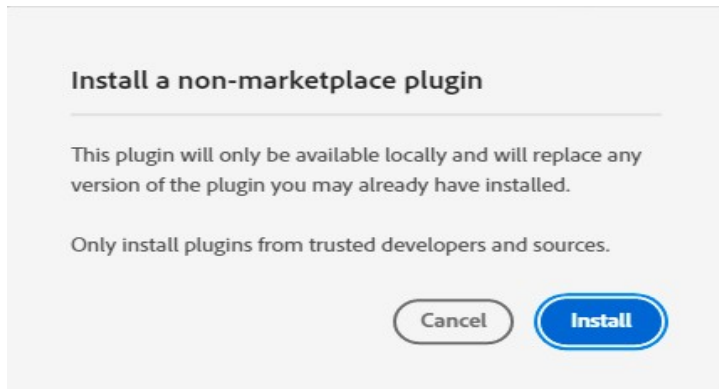
Please use only high-quality images. We recommend that the long dimension of your image be between **3000** and **4000** pixels, either in width or height. Lower size images may cause some issues.

You should estimate a run time of **1** to **5** minutes for each image in this pixel range, although this may change depending on a number of other factors.

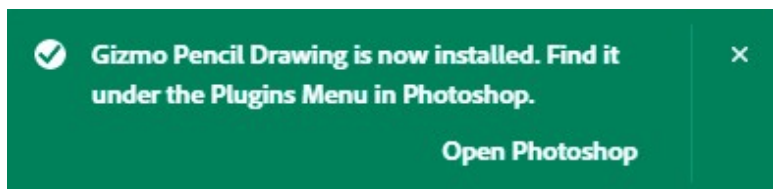
The **Gizmo Pencil Drawing** plugin is designed to operate exclusively with **JPG** images. Please ensure that your image is in **RGB Color** mode and **8Bits/Channel**.

### 2. INSTALLATION INSTRUCTIONS

- a. Download the installation file and unzip it.
- b. Double-click the downloaded CCX file.
- c. The Adobe Creative Cloud Desktop installer will open and ask you to confirm you wish to install.
- d. Click on "Install" button.



- e. Click "OK" to Install "Gizmo Pencil Drawing" plugin.
- f. You will get a confirmation message that "Gizmo Pencil Drawing" was installed.
- g. Open Adobe Photoshop.
- h. In Adobe Photoshop go to Plugins -> Gizmo Pencil Drawing to open Gizmo Pencil Drawing plugin.

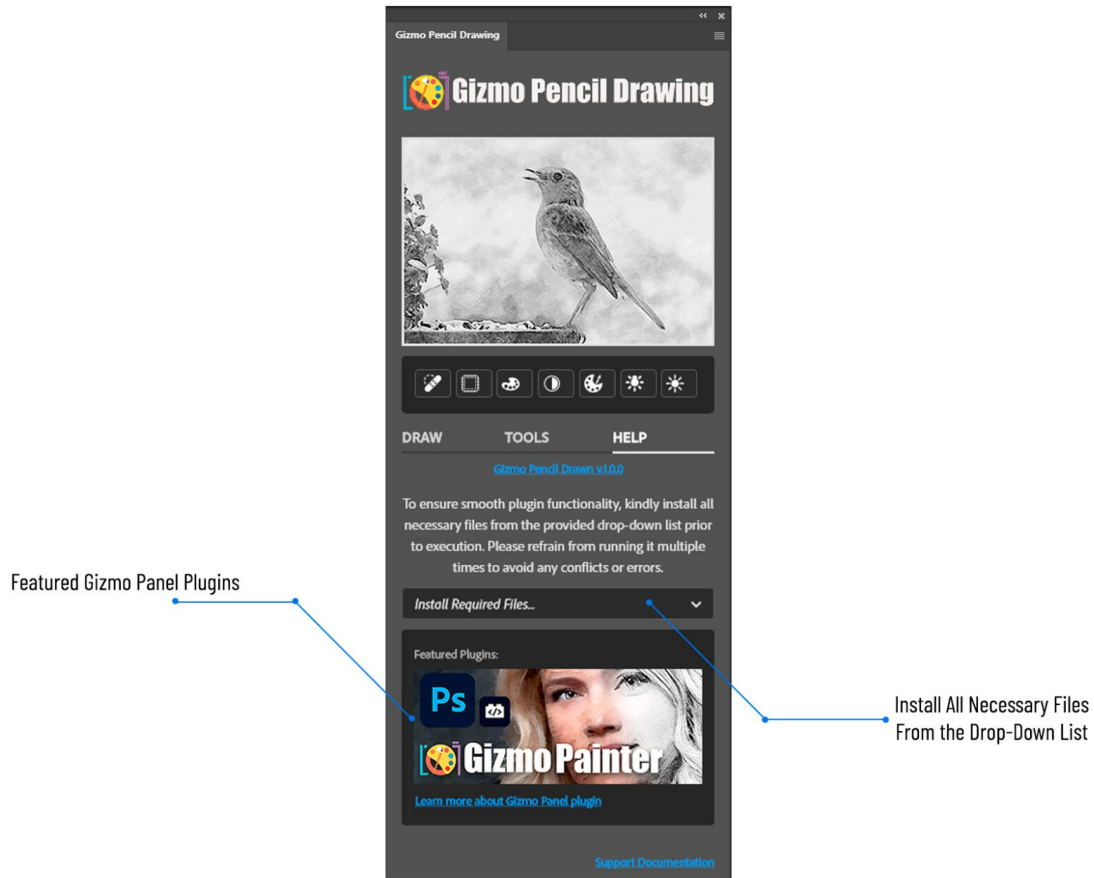


### 3. INSTALL REQUIRED FILES... (ON HELP TAB)

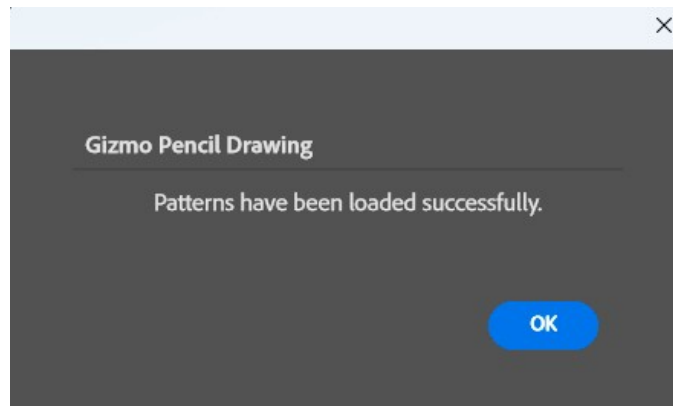
**First time installation only**, do the following once to get started and have all the required installed and available for Gizmo Pencil Drawing.

#### A. LOAD REQUIRED PATTERNS

- Load **Gizmo Pencil Drawing** plugin and Open the **HELP** tab.



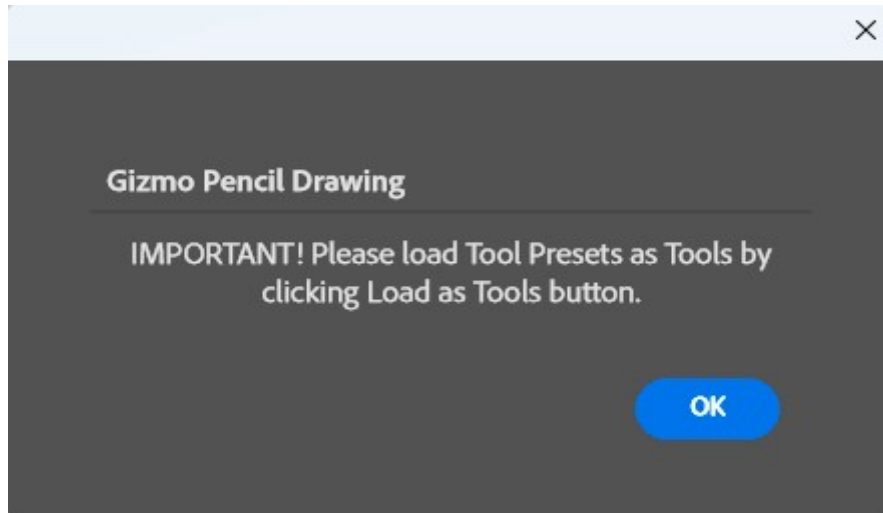
- Select "**Load Required Patterns**" from the drop-down list.
- Once the required patterns are installed, you will receive notification that "Patterns have been loaded successfully."



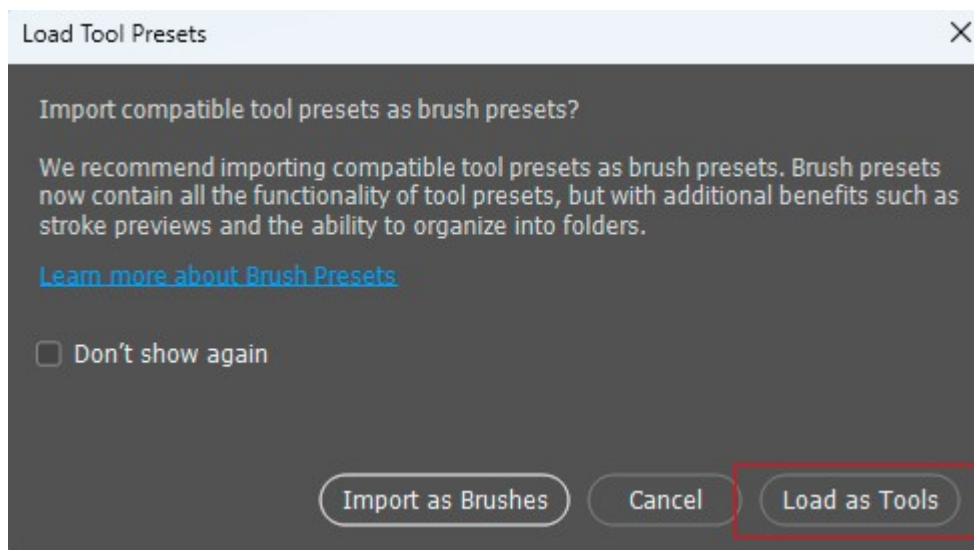
## B. LOAD REQUIRED TOOL PRESETS

Just execute once, first time you load and install the painter. If you are reinstalling a newer version of the painter, no need to do this option again. (**Note:** Go to view Tool Presets and unclick Current Tool Only at the bottom of the tool presets panel.)

You will get notification message to load **Tool Presets** as **Tools**. Please click "OK" button to go to the next step.

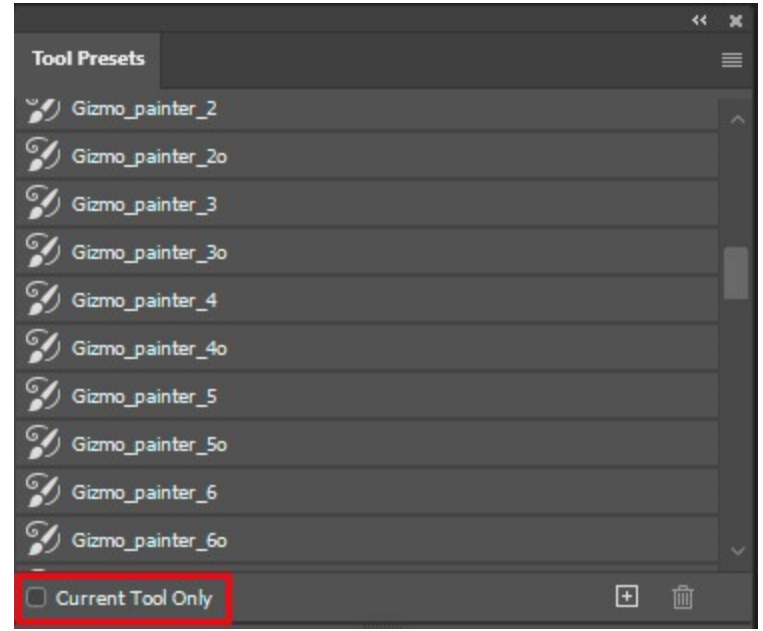
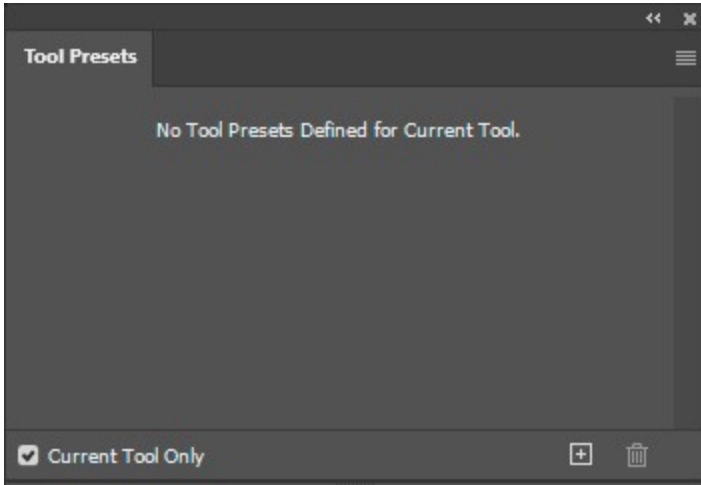


**IMPORTANT! Load Tools Presets as Tools** by clicking on "**Load as Tools**" button.



Open **Tool Presets** pop-up panel by navigating **Window -> Tool Presets** inside **Adobe Photoshop**.

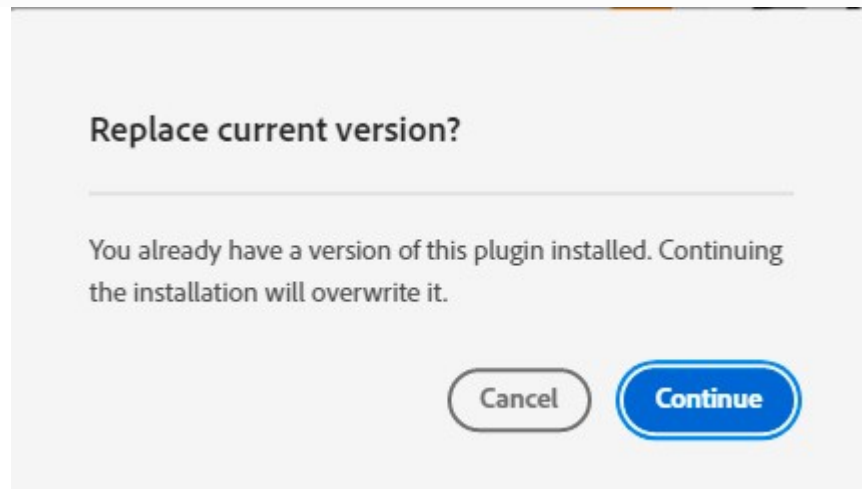
Make sure to uncheck **Current Tool Only** checkbox to display **Gizmo Pencil Drawing Tool Presets**.



#### 4. UPDATING GIZMO PENCIL DRAWING

The update process follows the same steps as the initial installation: Simply download and double click your updated Gizmo Pencil Drawing plugin. This will launch the Creative Cloud application and prompt you to replace the current version of the plugin. (**Do not** reinstall required files from help tab)

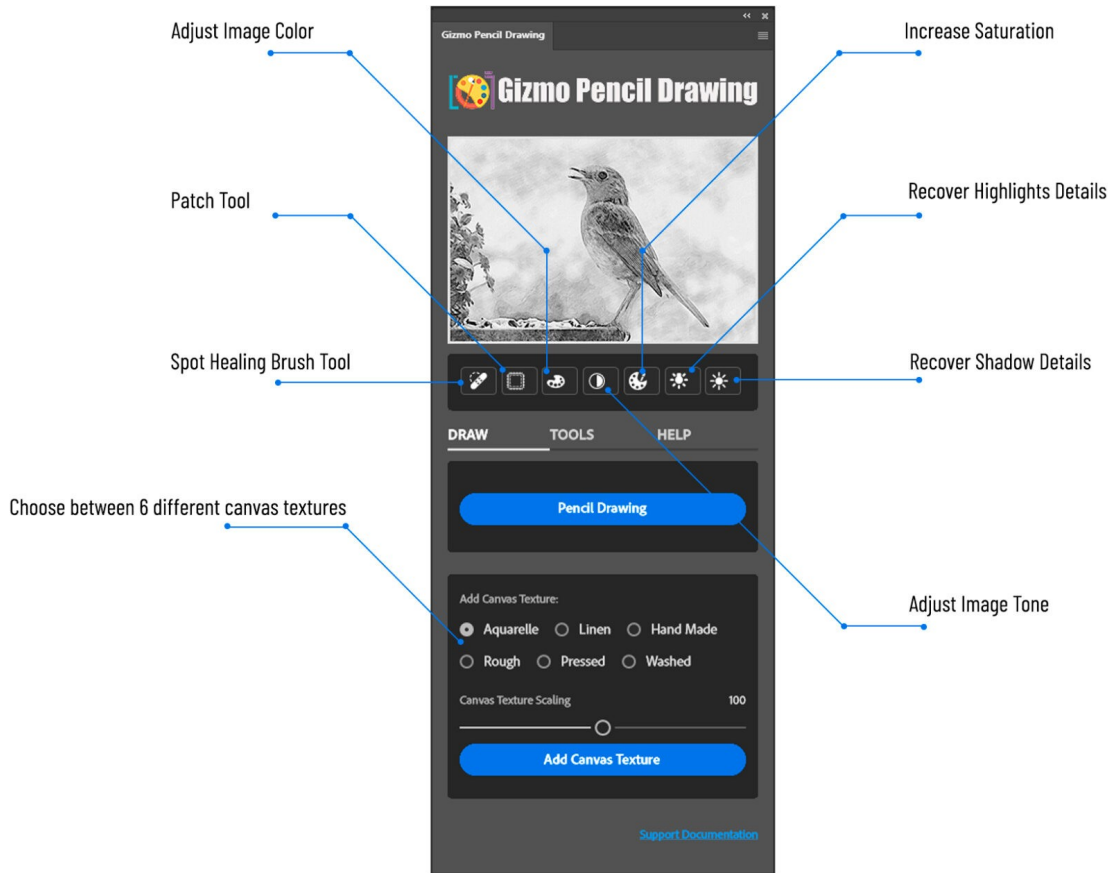
For more information about installing Creative Cloud app extensions or plugins visit Adobe support site: <https://helpx.adobe.com/creative-cloud/kb/troubleshoot-common-addon-installation-issues.html>



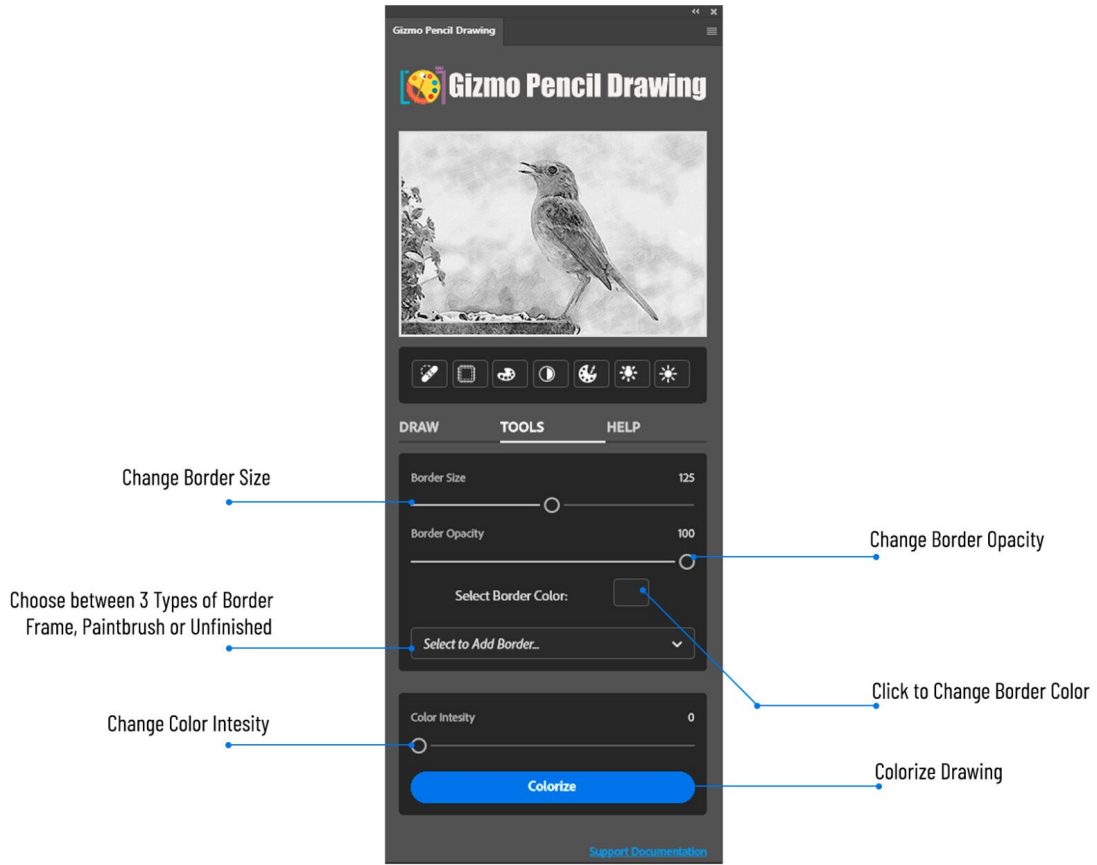


### III. OVERVIEW

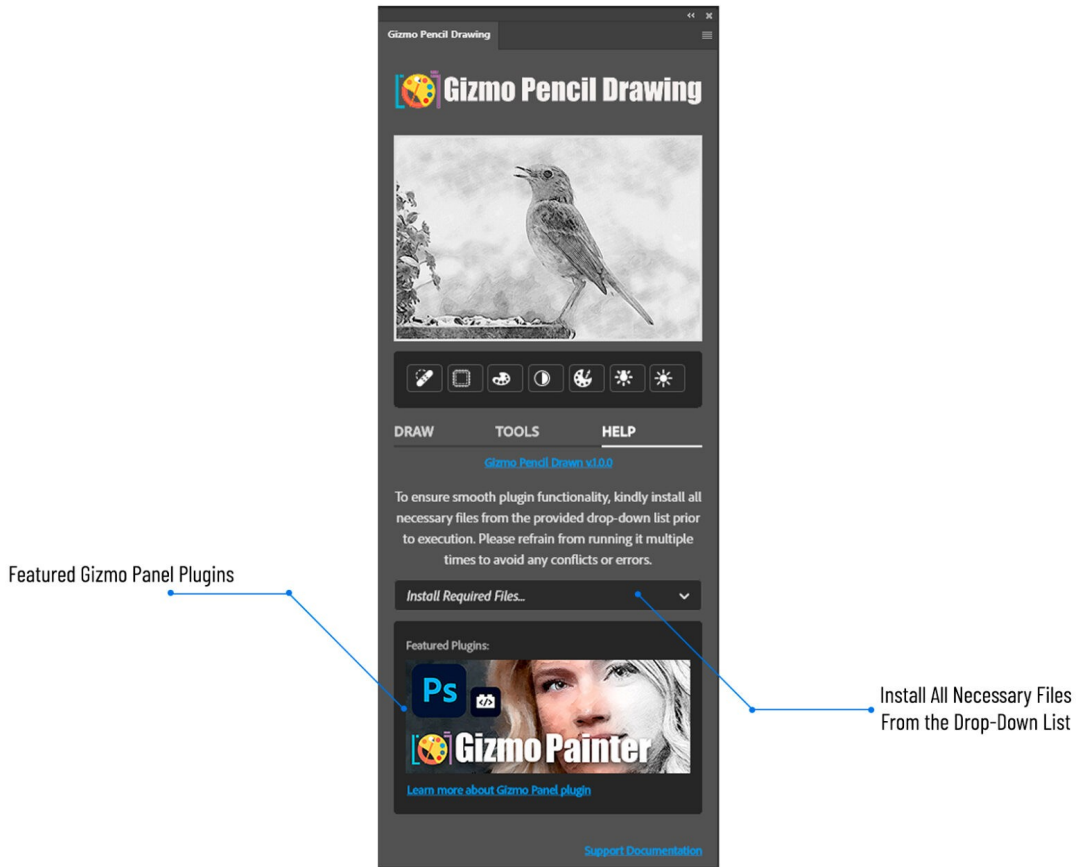
#### 1. DRAW TAB



## 2. TOOLS TAB



### 3. HELP TAB



## IV. TOP PANEL



Top of the Panel options will only work, when you execute any of the drawing tools first. If you want to use those, you can, the spot healing works with or without, but otherwise we recommend doing the drawing options first and then coming back to execute any of the following tools.

### 1. SPOT HEALING

Use this tool to remove imperfections in your Painter final art work.

### 2. PATCH TOOL

Patch and fix any areas where you want to replace one area with another.

### 3. IMAGE COLOR ADJUSTMENT

Automatically adjusts color of your image.

### 4. TONE ADJUSTMENT

Automatically adjusts image tones.

### 5. INCREASE SATURATION

Click on **Saturation** to maximize the vibrancy and intensity of your RGB colors to make them pop.

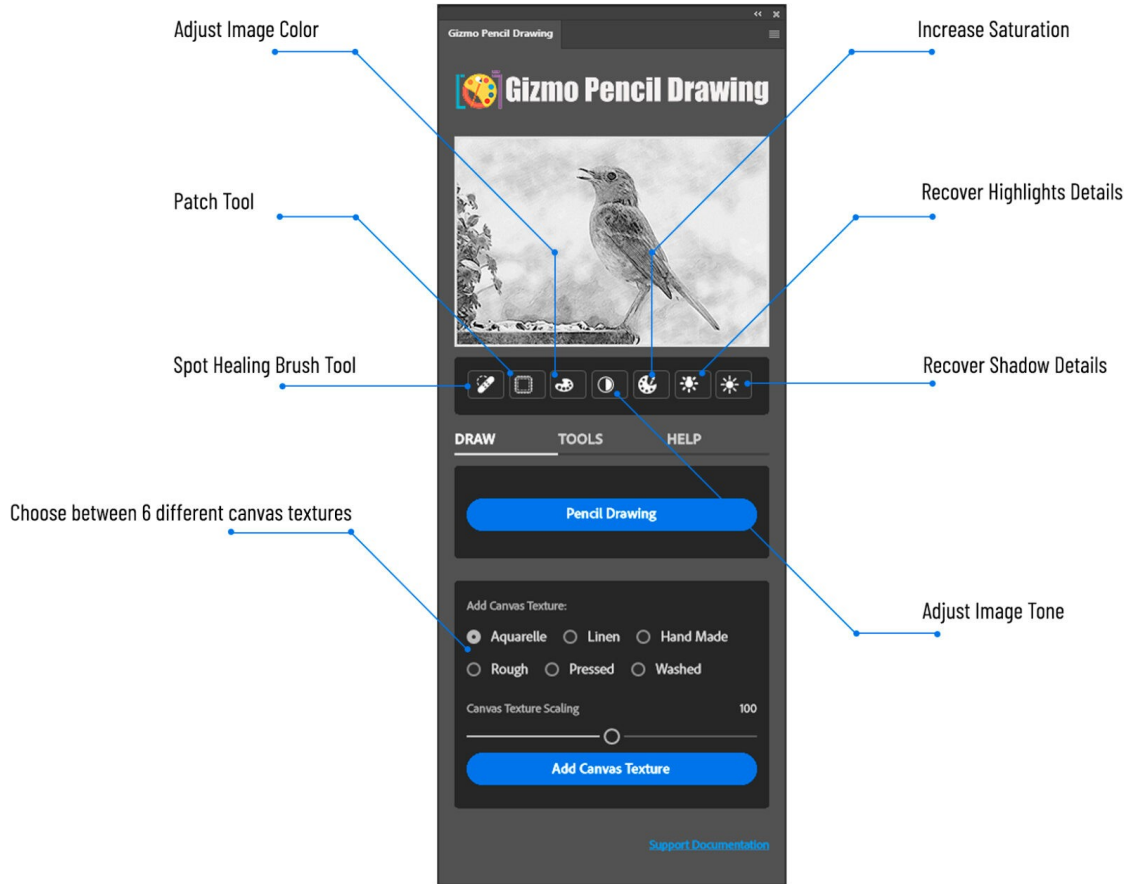
### 6. RECOVER HIGHLIGHTS

Recovers more highlights.

### 7. RECOVER SHADOWS

Recovers more shadows.

## V. DRAW TAB



## 1. PENCIL DRAWING

Select this option and with just one click, transform your photos into stunning pencil drawing / sketch. The Gizmo Pencil Drawing layer is deleted and recreated with this option. (**Note:** if you made any changes to this image before, it will reset, delete all that was made and recreate new layers based on this selection.)

## 2. ADD CANVAS TEXTURE

Select desired canvas texture, or layer variety of textures one at a time. If you notice, when you created a drawing option in item 2 above, you got new layers, one of them is textures. Every time you select a new texture and click "Add Canvas Texture" button, the Canvas Texture layer is deleted and recreated with the one you selected.

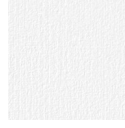
A. AQUARELLE



B. LINEN



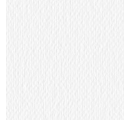
C. HAND MADE



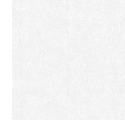
D. ROUGH



E. PRESSED



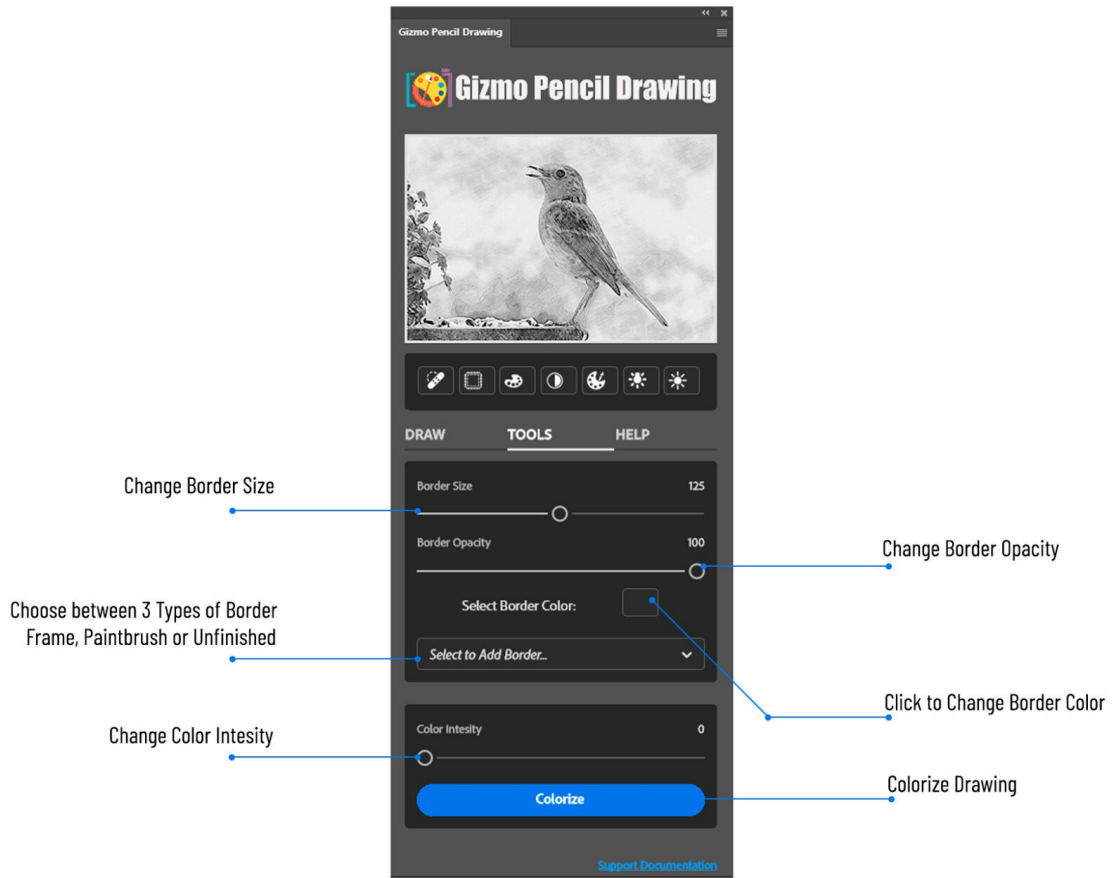
F. WASHED



## 3. CANVAS TEXTURE SCALING

Determines and defines the size of texture by scaling texture smaller to the left and bigger to the right.

## VI. TOOLS TAB



## 1. BORDER SIZE

Defines and sets border size (width). To make changes, Select to Add Border.

## 2. BORDER OPACITY

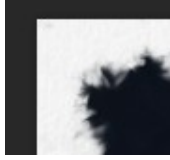
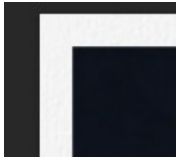
Sets border Opacity. To make changes, Select to Add Border. (**Note:** Not applicable for Unfinished Border.)

## 3. SELECT BORDER COLOR

Change border color. To make changes or set up a new border, Select to Add Border. (**Note:** Not applicable for Unfinished Border.)

## 4. SELECT TO ADD BORDER... (TYPE)

A. ADD FRAME BORDER | B. ADD PAINTBRUSH BORDER | C. ADD UNFINISHED BORDER



## 5. COLOR INTENSITY

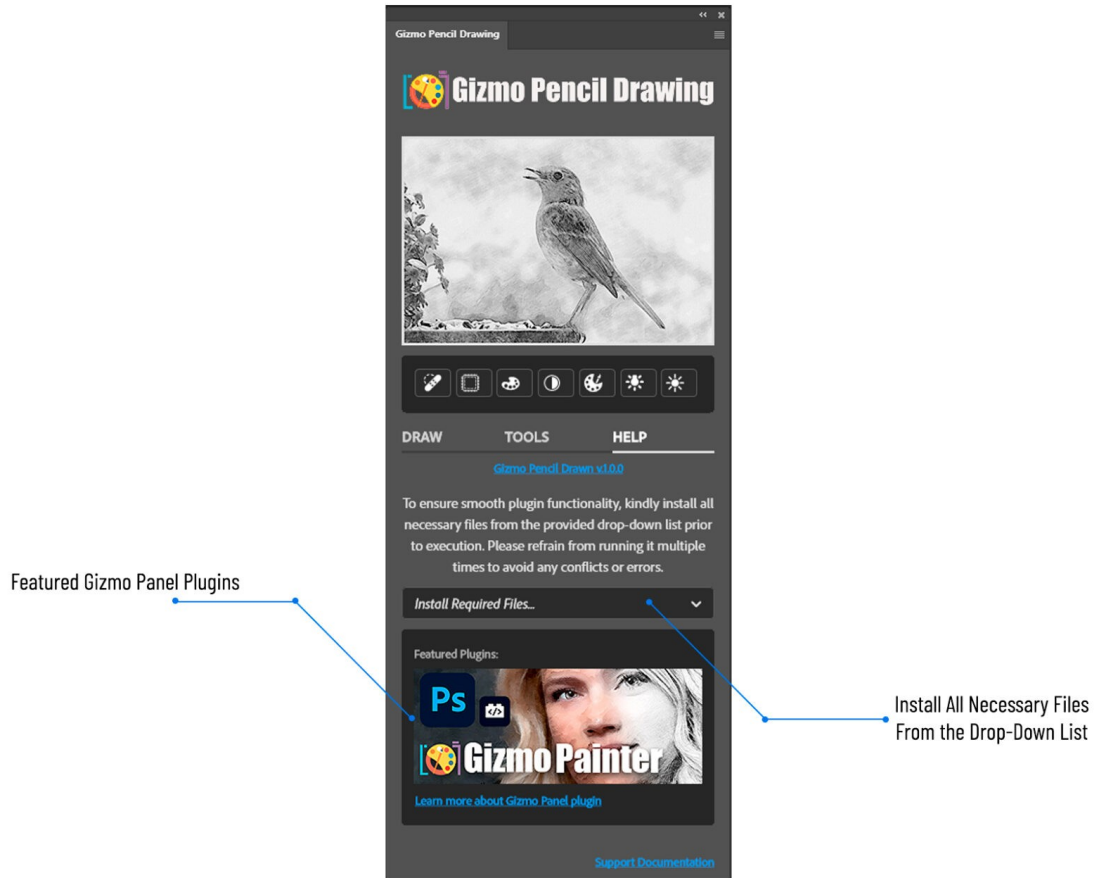
How much color would you like to add to your drawing. The drawing will enhance and restore original colors of the picture, depending on intensity set in this option.

## 6. COLORIZE DRAWING

Will enhance and colorize your drawing, bringing back color intensity set in previous option.



## VII. HELP TAB

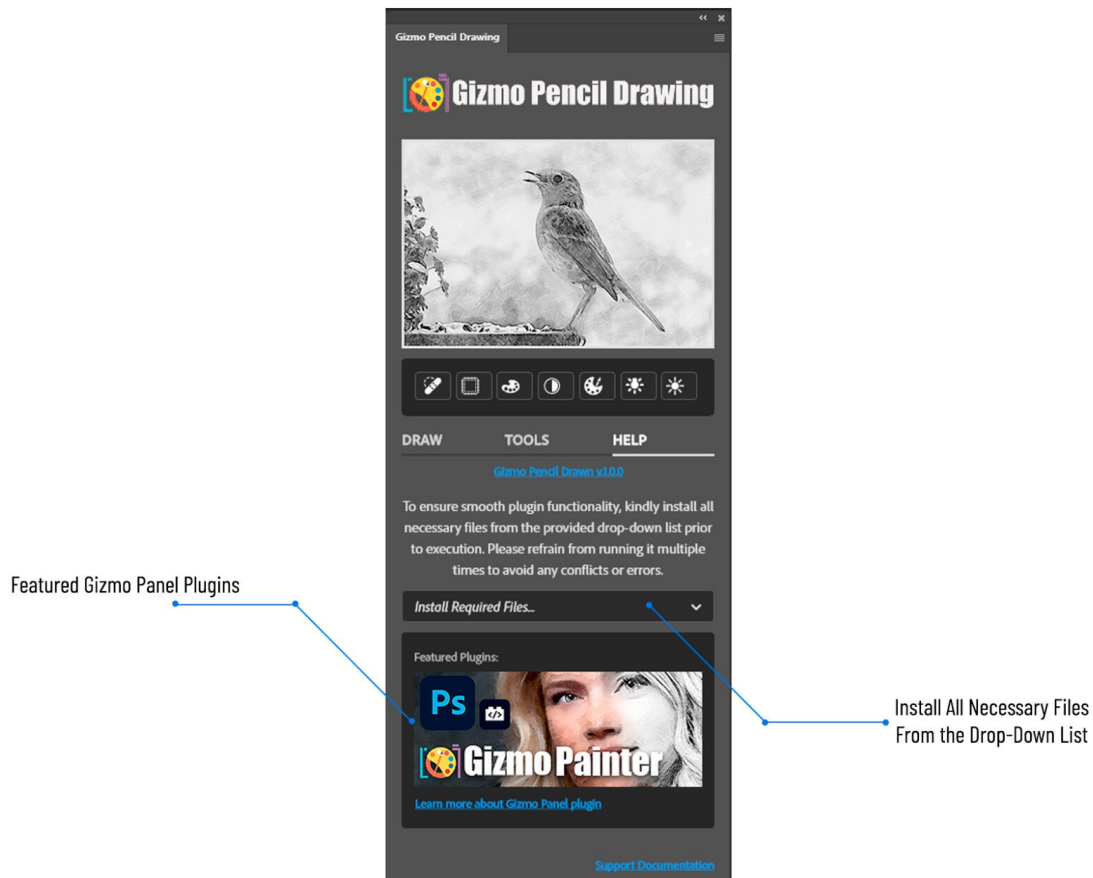


## 1. INSTALL REQUIRED FILES...

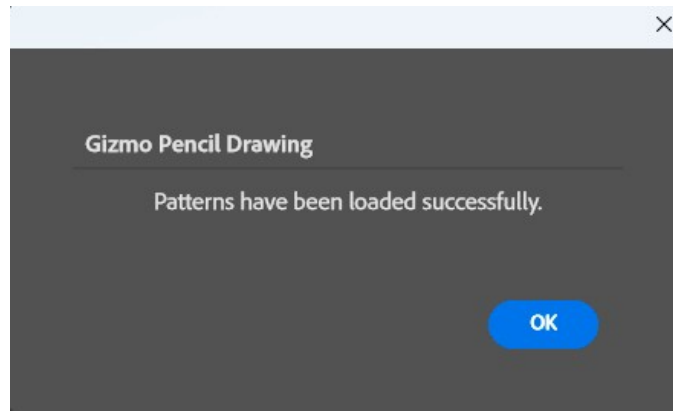
**First time installation only**, do the following once to get started and have all the required installed and available for Gizmo Pencil Drawing.

### A. LOAD REQUIRED PATTERNS

- Load **Gizmo Pencil Drawing** plugin and Open the **HELP** tab.



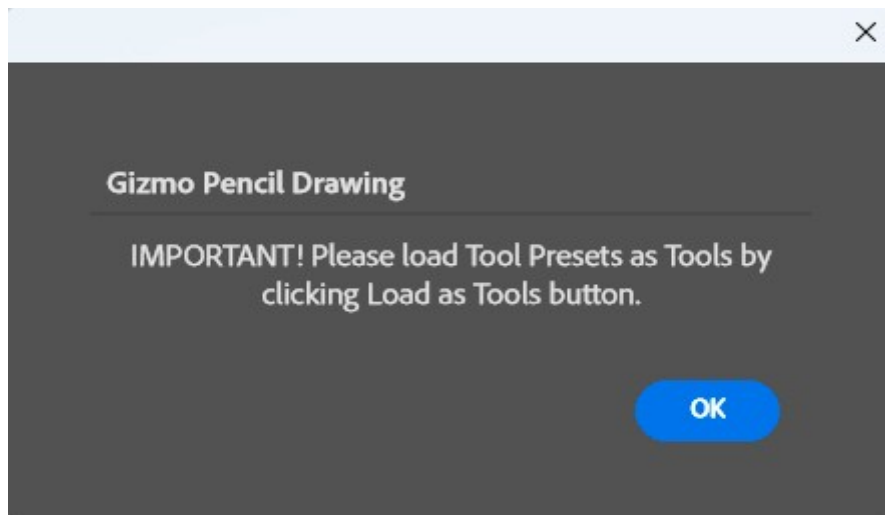
- Select "**Load Required Patterns**" from the drop-down list.
- Once the required patterns are installed, you will receive notification that "Patterns have been loaded successfully."



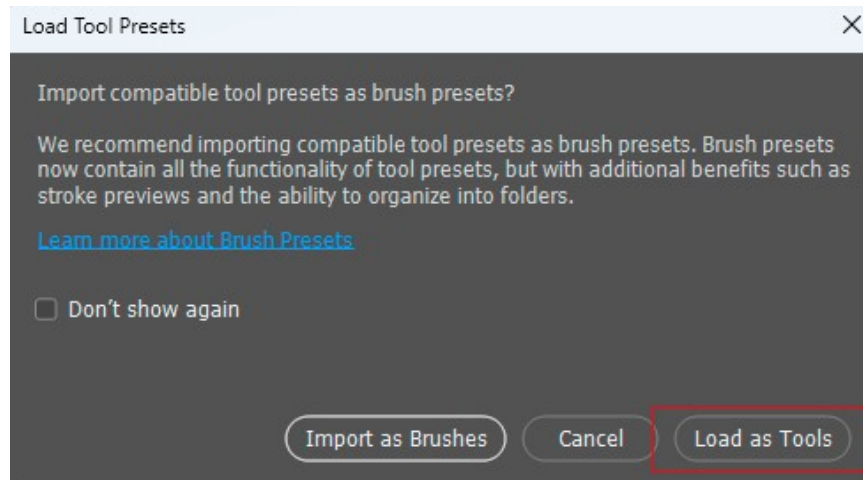
## B. LOAD REQUIRED TOOL PRESETS

Just execute once, first time you load and install the painter. If you are reinstalling a newer version of the painter, no need to do this option again. (**Note:** Go to view Tool Presets and unclick Current Tool Only at the bottom of the tool presets panel.)

You will get notification message to load **Tool Presets** as **Tools**. Please click "OK" button to go to the next step.



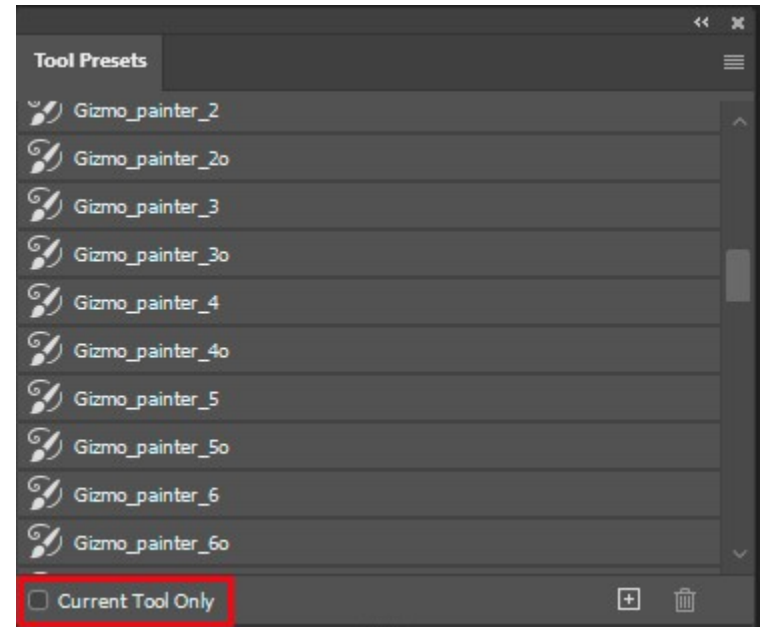
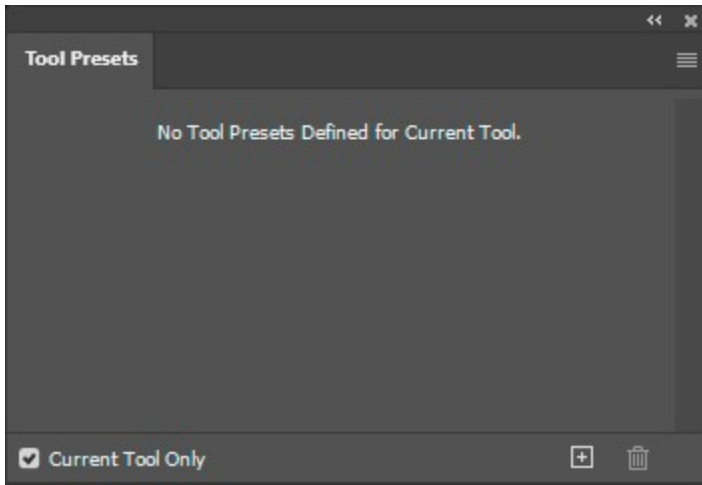
**IMPORTANT! Load Tools Presets as Tools** by clicking on "**Load as Tools**" button.



## Gizmo Pencil Drawing

Open **Tool Presets** pop-up panel by navigating **Window** -> **Tool Presets** inside **Adobe Photoshop**.

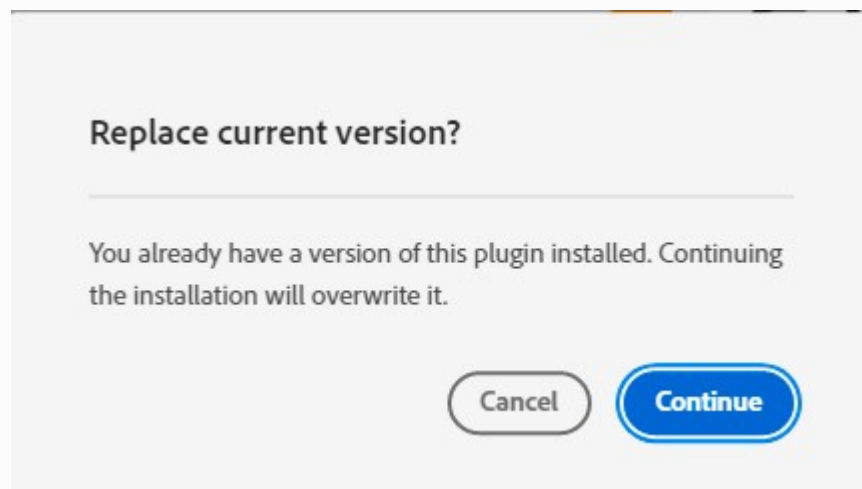
Make sure to uncheck **Current Tool Only** checkbox to display **Gizmo Pencil Drawing Tool Presets**.



## 2. UPDATING GIZMO PENCIL DRAWING

The update process follows the same steps as the initial installation: Simply download and double click your updated Gizmo Pencil Drawing plugin. This will launch the Creative Cloud application and prompt you to replace the current version of the plugin. (**Do not** reinstall required files from help tab)

For more information about installing Creative Cloud app extensions or plugins visit Adobe support site: <https://helpx.adobe.com/creative-cloud/kb/troubleshoot-common-addon-installation-issues.html>



### 3. FEATURED PLUGINS

In this area of the plug in, we will always have all the other plugins, featured and current, that we already have and released, new releases or updates. Please check this tab in all of our plugins for news and updates to new and exciting products that we currently have or about to release.

## VIII. INDEX

### 1. GIZMO PENCIL DRAWING VERSION CHANGE LOG

Version	Description or Nature of Changes
1.0.0	Initial Version

### 2. GIZMO PENCIL DRAWING FREQUENTLY ASKED QUESTIONS (FAQ)