

Gizmo Watercolor Instruction Manual



[Gizmo Watercolor Website:](https://gizmopanel.com/)

<https://gizmopanel.com/>

[Support: support@gizmopanel.com](mailto:support@gizmopanel.com)

Table of Contents

I. Introduction to Gizmo Watercolor.....	4
II. Gizmo Watercolor Installation.....	4
1. <i>System Requirements.....</i>	4
2. <i>Installation Instructions.....</i>	4
3. <i>Install Required Files... (On Help Tab).....</i>	5
A. <i>Load Required Patterns.....</i>	5
B. <i>Load Required Tool Presets.....</i>	6
4. <i>Updating Gizmo Watercolor.....</i>	8
III. Overview.....	9
1. <i>Painter Tab.....</i>	9
2. <i>Tools Tab.....</i>	10
3. <i>Help Tab.....</i>	11
IV. Top Panel.....	12
1. <i>Spot Healing.....</i>	12
2. <i>Patch Tool.....</i>	12
3. <i>Image Color Adjustment.....</i>	12
4. <i>Tone Adjustment.....</i>	12
5. <i>Increase Saturation.....</i>	12
6. <i>Recover highlights.....</i>	12
7. <i>Recover Shadows.....</i>	12
V. Painter Tab.....	13
1. <i>Brush Size.....</i>	14
2. <i>Watercolor.....</i>	14
3. <i>Add Canvas Texture.....</i>	14
A. <i>Aquarelle B. Linen C. Hand Made.....</i>	14
D. <i>Rough E. Pressed F. Washed.....</i>	14
4. <i>Canvas Texture Scaling.....</i>	14
VI. Tools Tab.....	15
1. <i>Border Size.....</i>	16
2. <i>Border Opacity.....</i>	16
3. <i>Select Border Color.....</i>	16
4. <i>Select To Add Border... (type).....</i>	16
A. <i>Add Frame Border B. Add Paintbrush Border C. Add Unfinished Border.....</i>	16



- 5. *Splashes Size*..... 16
- 6. *Select Splash Color*..... 16
- 7. *Add Splashes*..... 16

- VII. Help Tab**.....**17**
 - 1. *Install Required Files*..... 18
 - A. *Load Required Patterns*..... 18
 - B. *Load Required Tool Presets*..... 19
 - 2. *Updating Gizmo Watercolor*..... 20
 - 3. *Featured Plugins*..... 21

- VIII. INDEX**.....**22**
 - 1. *Gizmo Watercolor Version Change Log*..... 22
 - 2. *Gizmo Watercolor Frequently Asked Questions (FAQ)*..... 22

I. INTRODUCTION TO GIZMO WATERCOLOR

If you are here, you are now experiencing motivation to do more with your photography, better and easier with your Adobe Photoshop skills, and editing abilities. Now with the Gizmo Watercolor Plugin, elevate your artistic vision. With just one click, transform your photos into stunning, lifelike watercolor paintings. Unleash your creativity with a variety of brushstrokes, from the richness of watercolor. Experience the trans-formative power of Gizmo Watercolor Plugin and take your artwork to the next level.

II. GIZMO WATERCOLOR INSTALLATION

1. SYSTEM REQUIREMENTS

Gizmo Watercolor requires the latest version of Adobe Photoshop in order to function properly. The minimum required version of Adobe Photoshop is v23.3.2. If you are using an older version of the software, please upgrade to the latest edition in order to use Gizmo Watercolor.

Gizmo Watercolor plugin will work only with **ENGLISH** version of **Adobe Photoshop**. For instructions on changing your Photoshop language to English please visit following link: <https://helpx.adobe.com/creative-cloud/help/change-install-language.html>

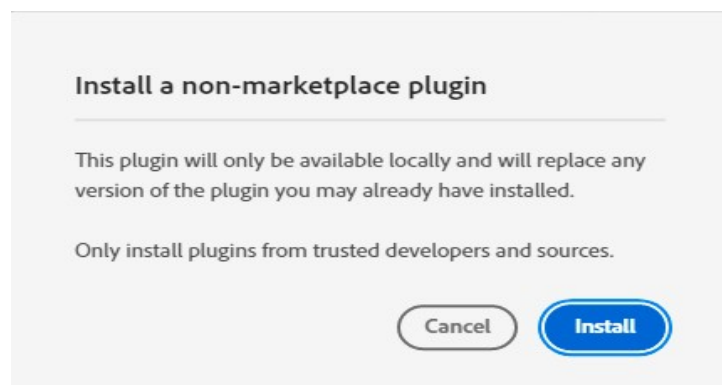
Please use only high-quality images. We recommend that the long dimension of your image be between **3000** and **4000** pixels, either in width or height. Lower size images may cause some issues.

You should estimate a run time of **2** to **15** minutes for each image in this pixel range, although this may change depending on a number of other factors.

The **Gizmo Watercolor** plugin is designed to operate exclusively with **JPG** images. Please ensure that your image is in **RGB Color** mode and **8Bits/Channel**.

2. INSTALLATION INSTRUCTIONS

- a. Download the installation file and unzip it.
- b. Double-click the downloaded CCX file.
- c. The Adobe Creative Cloud Desktop installer will open and ask you to confirm you wish to install.
- d. Click on "Install" button.



Install 'Gizmo Watercolor' plugin

This plugin has been developed by a third-party developer and you may be asked to enter your administrator password to complete the installation. Be sure to only install plugins from developers you trust, as plugins may be able to:

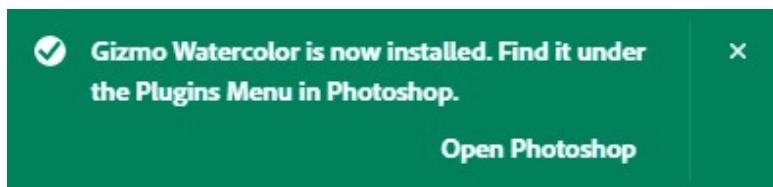
- Read and write to files on your device
- Make and receive network requests
- Access any devices present on your computer

Adobe's privacy policy and terms of use are not applicable to this plugin. Please refer to the terms of service provided by this plugin's developer.

Cancel

OK

- e. Click "OK" to Install "Gizmo Watercolor" plugin.
- f. You will get a confirmation message that "Gizmo Watercolor" was installed.
- g. Open Adobe Photoshop.
- h. In Adobe Photoshop go to Plugins -> Gizmo Watercolor to open Gizmo Watercolor plugin.

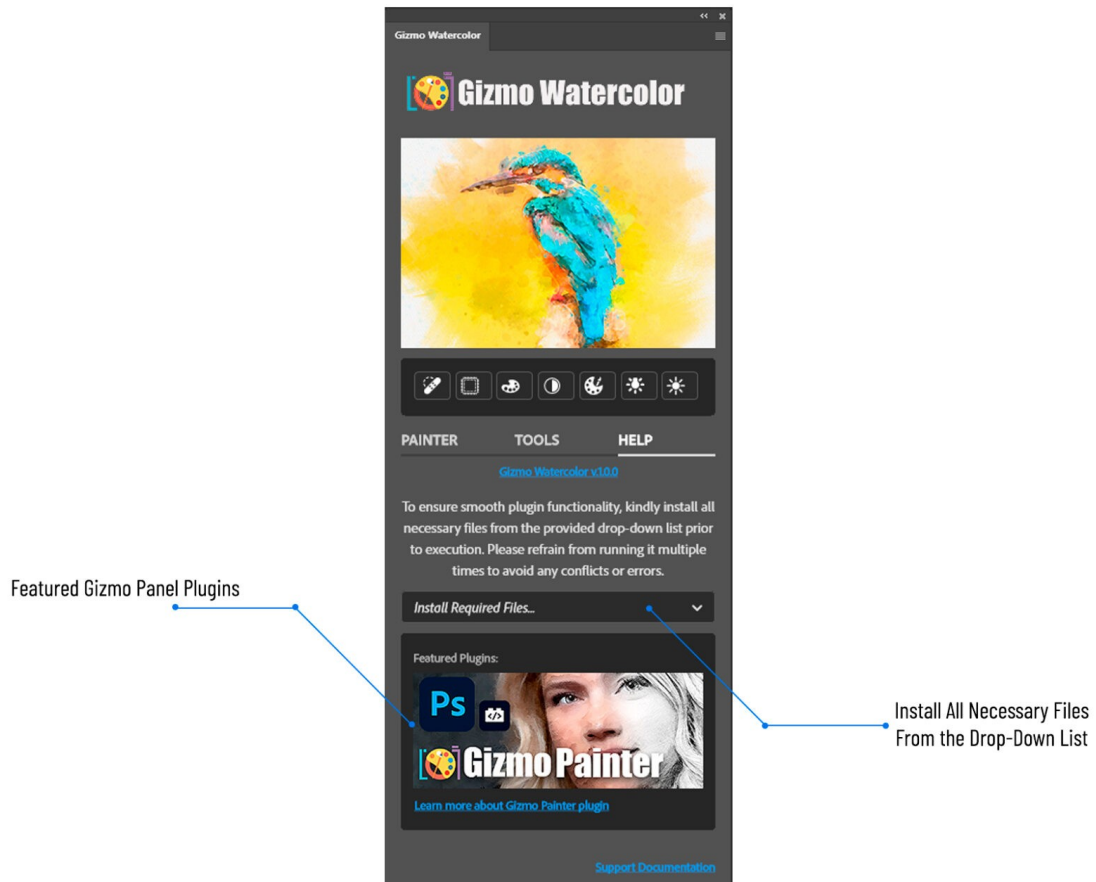


3. INSTALL REQUIRED FILES... (ON HELP TAB)

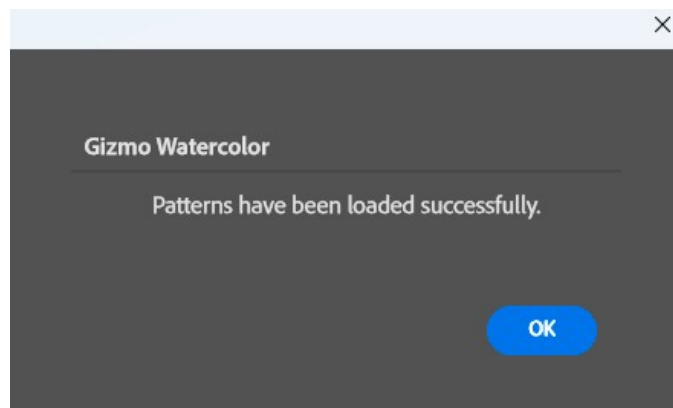
First time installation only, do the following once to get started and have all the required installed and available for Gizmo Watercolor.

A. LOAD REQUIRED PATTERNS

- Load **Gizmo Watercolor** plugin and Open the **HELP** tab.



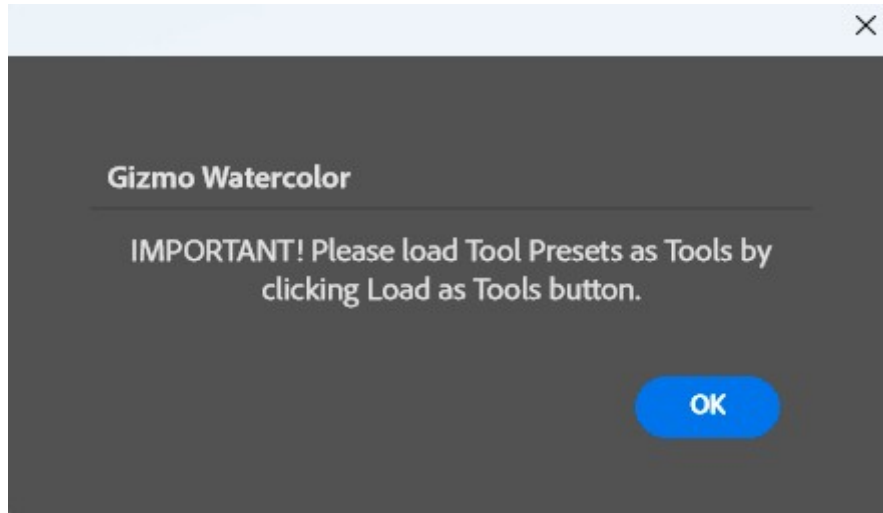
- Select "**Load Required Patterns**" from the drop-down list.
- Once the required patterns are installed, you will receive notification that "Patterns have been loaded successfully."



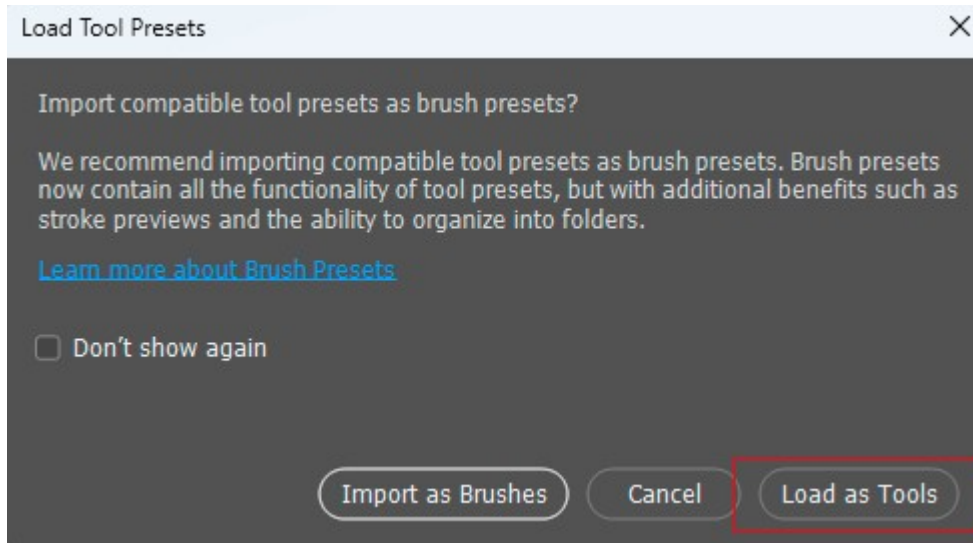
B. LOAD REQUIRED TOOL PRESETS

Just execute once, first time you load and install the painter. If you are reinstalling a newer version of the painter, no need to do this option again. (**Note:** Go to view Tool Presets and unclick Current Tool Only at the bottom of the tool presets panel.)

You will get notification message to load **Tool Presets** as **Tools**. Please click "OK" button to go to the next step.

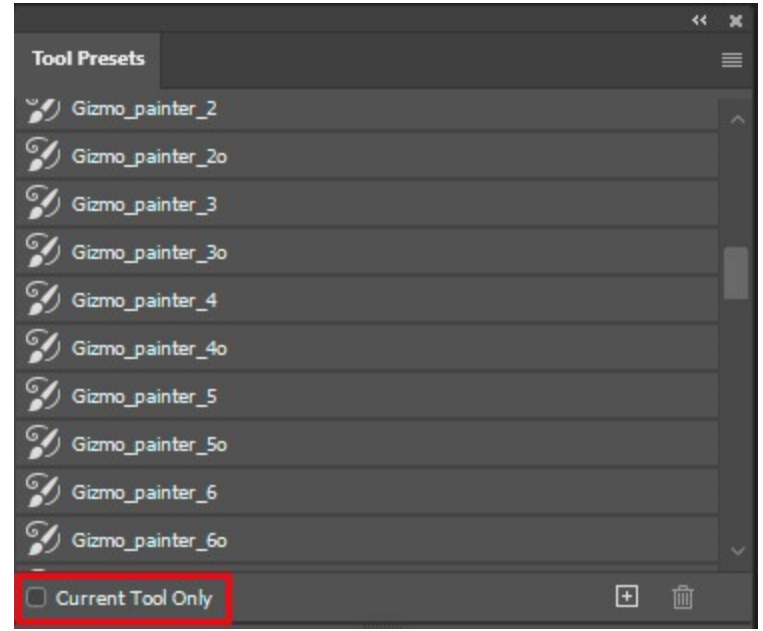
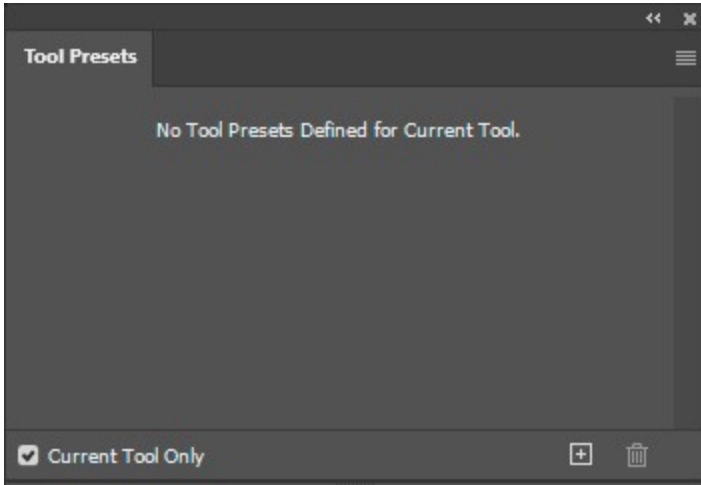


IMPORTANT! Load Tools Presets as Tools by clicking on "**Load as Tools**" button.



Open **Tool Presets** pop-up panel by navigating **Window -> Tool Presets** inside **Adobe Photoshop**.

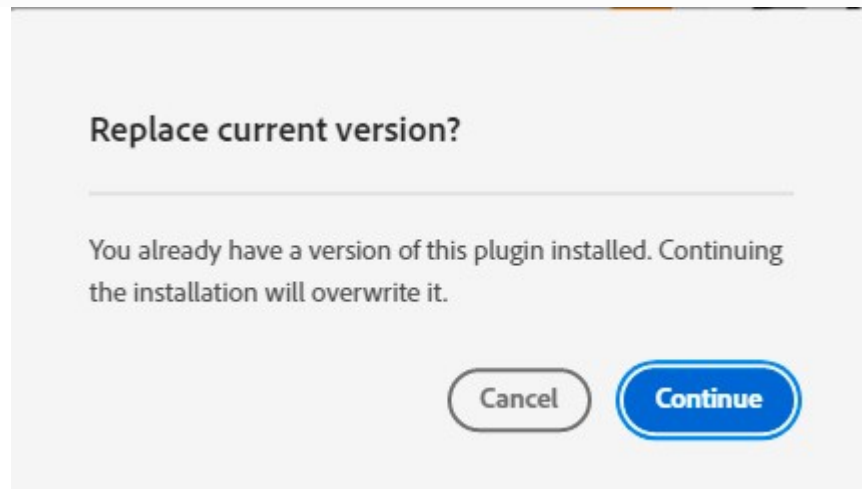
Make sure to uncheck **Current Tool Only** checkbox to display **Gizmo Watercolor Tool Presets**.



4. UPDATING GIZMO WATERCOLOR

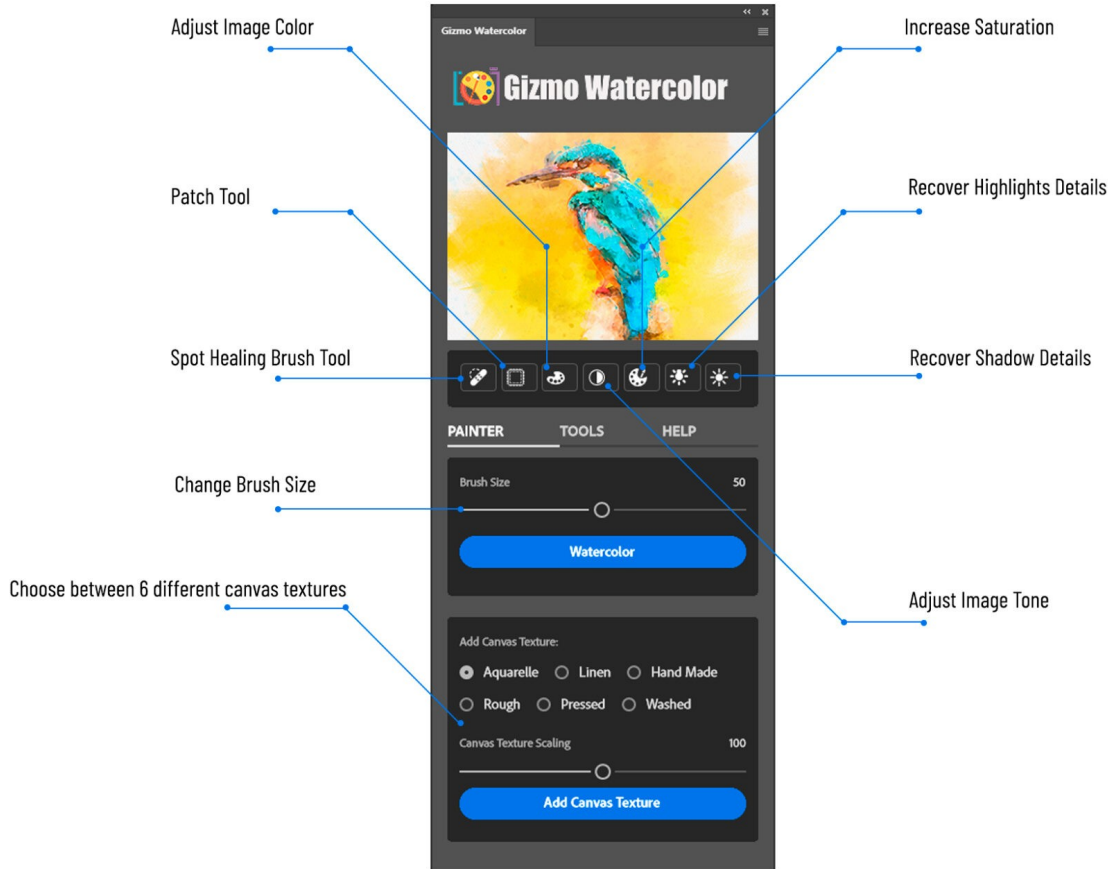
The update process follows the same steps as the initial installation: Simply download and double click your updated Gizmo Watercolor plugin. This will launch the Creative Cloud application and prompt you to replace the current version of the plugin. (**Do not** reinstall required files from help tab)

For more information about installing Creative Cloud app extensions or plugins visit Adobe support site: <https://helpx.adobe.com/creative-cloud/kb/troubleshoot-common-addon-installation-issues.html>

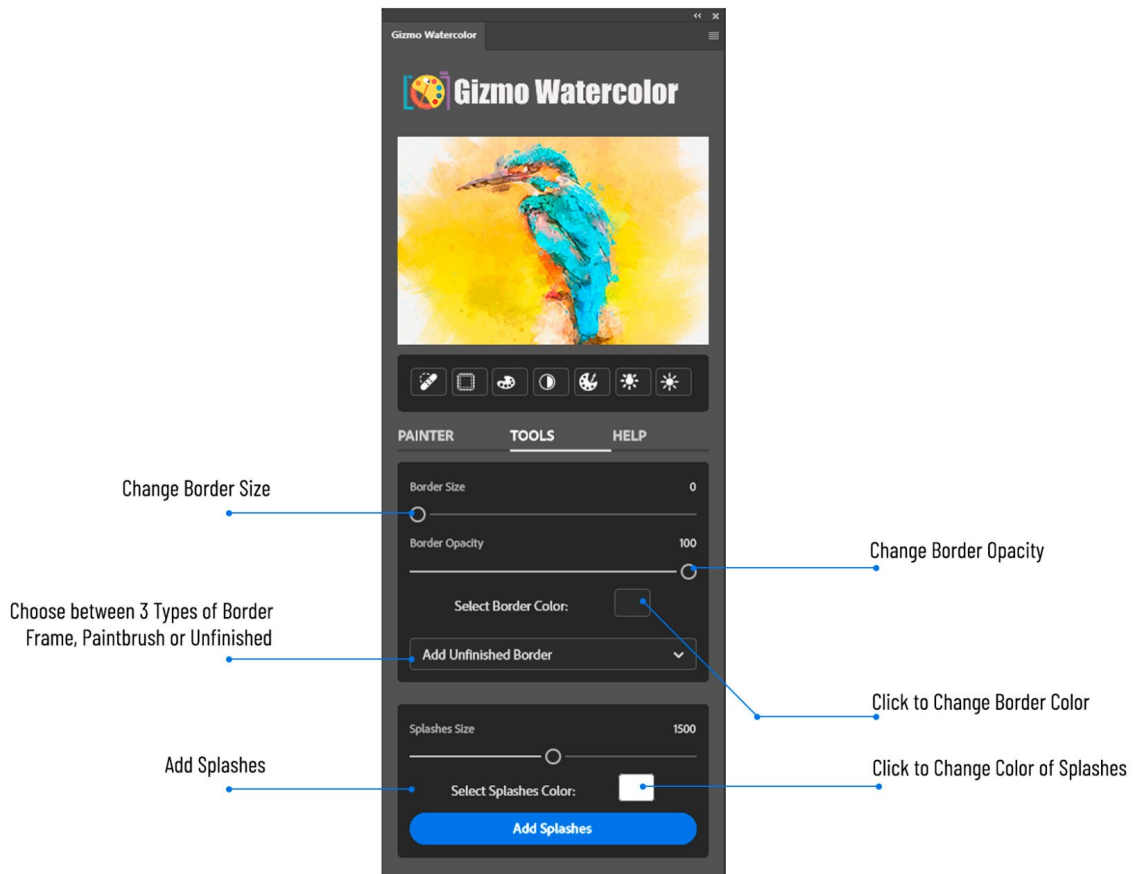


III. OVERVIEW

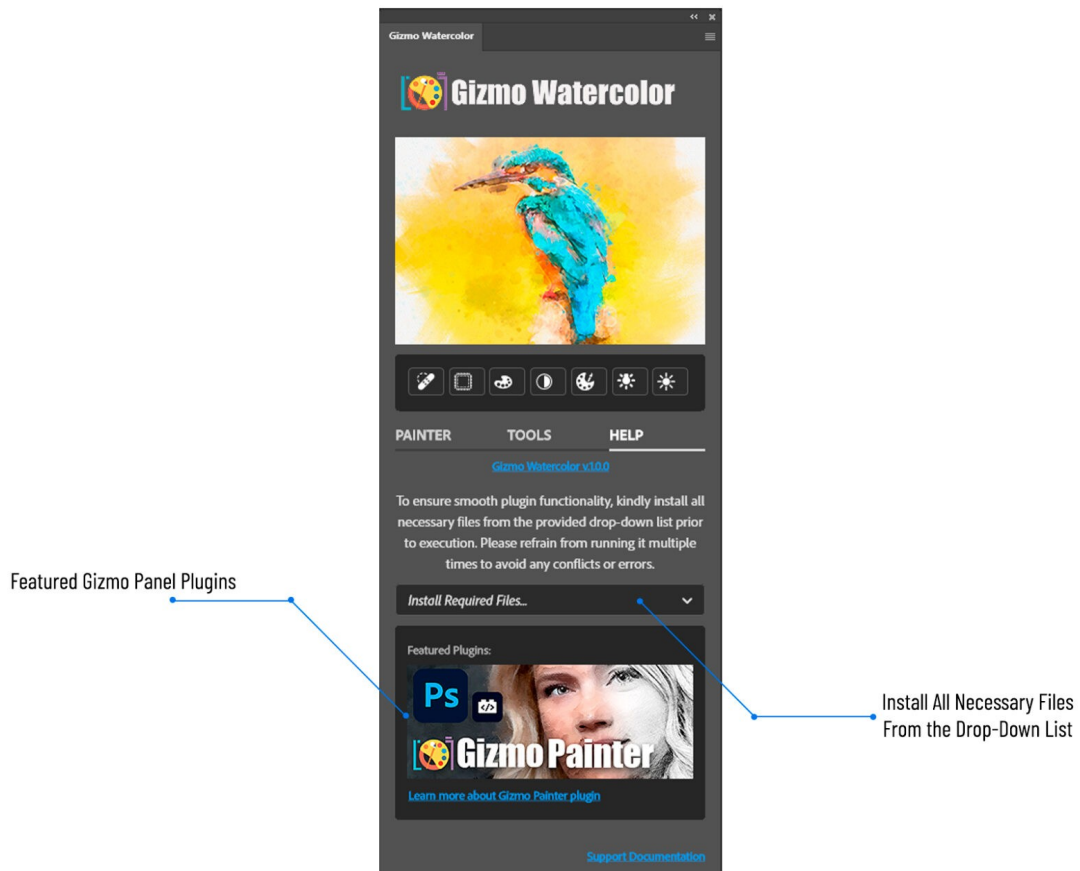
1. PAINTER TAB



2. TOOLS TAB



3. HELP TAB



IV. TOP PANEL



Top of the Panel options will only work, when you execute any of the painter tools first. If you want to use those, you can, the spot healing works with or without, but otherwise we recommend doing the painter options first and then coming back to execute any of the following tools.

1. SPOT HEALING

Use this tool to remove imperfections in your Painter final art work.

2. PATCH TOOL

Patch and fix any areas where you want to replace one area with another.

3. IMAGE COLOR ADJUSTMENT

Automatically adjusts color of your image.

4. TONE ADJUSTMENT

Automatically adjusts image tones.

5. INCREASE SATURATION

Click on **Saturation** to maximize the vibrancy and intensity of your RGB colors to make them pop.

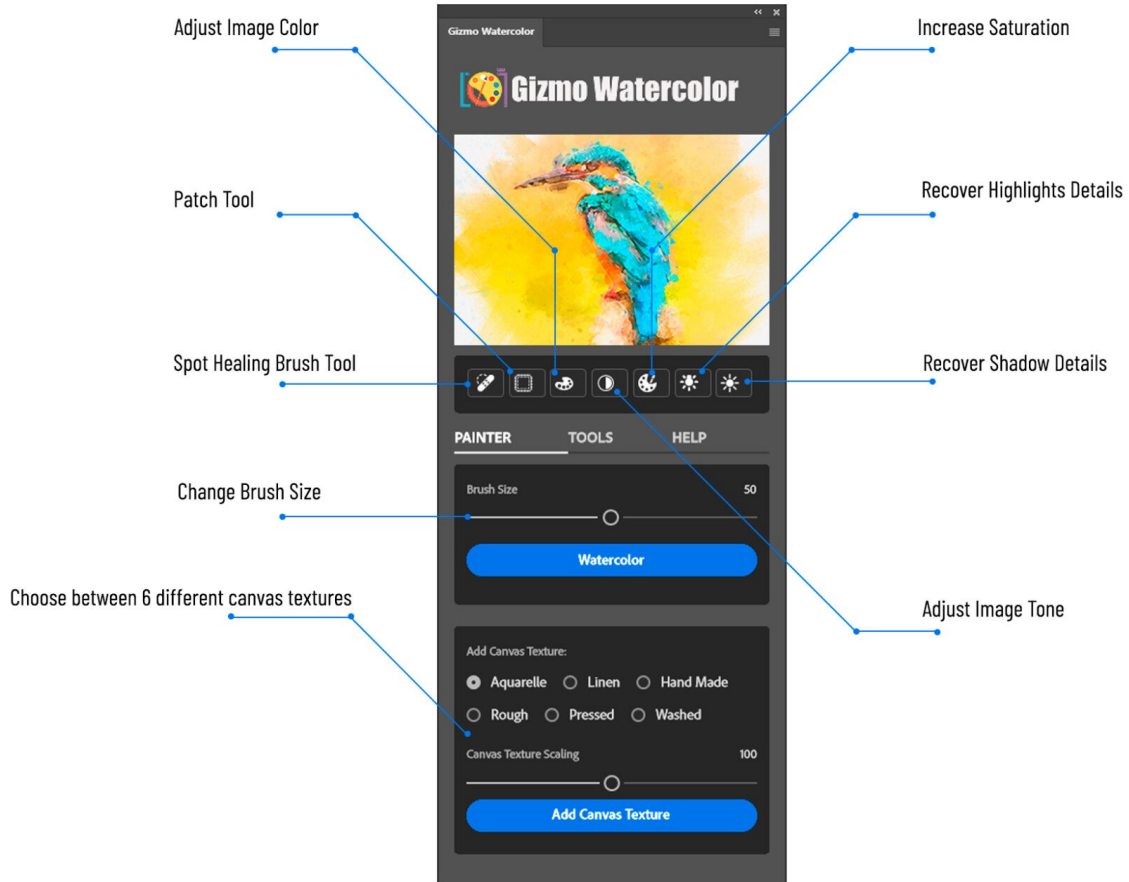
6. RECOVER HIGHLIGHTS

Recovers more highlights.

7. RECOVER SHADOWS

Recovers more shadows.

V. PAINTER TAB



1. BRUSH SIZE

Select the desired brush size for your brush strokes in your artwork.

2. WATERCOLOR

Select this option and with just one click, transform your photos into stunning watercolors. The Gizmo Watercolor layer is deleted and recreated with this option. (**Note:** if you made any changes to this image before, it will reset, delete all that was made and recreate new layers based on this selection.)

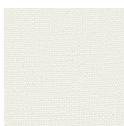
3. ADD CANVAS TEXTURE

Select desired canvas texture, or layer variety of textures one at a time. If you notice, when you created a painter option in item 2 above, you got new layers, one of them is textures. Every time you select a new texture and click "Add Canvas Texture" button, the Canvas Texture layer is deleted and recreated with the one you selected.

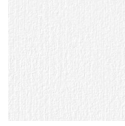
A. AQUARELLE



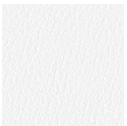
B. LINEN



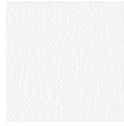
C. HAND MADE



D. ROUGH



E. PRESSED



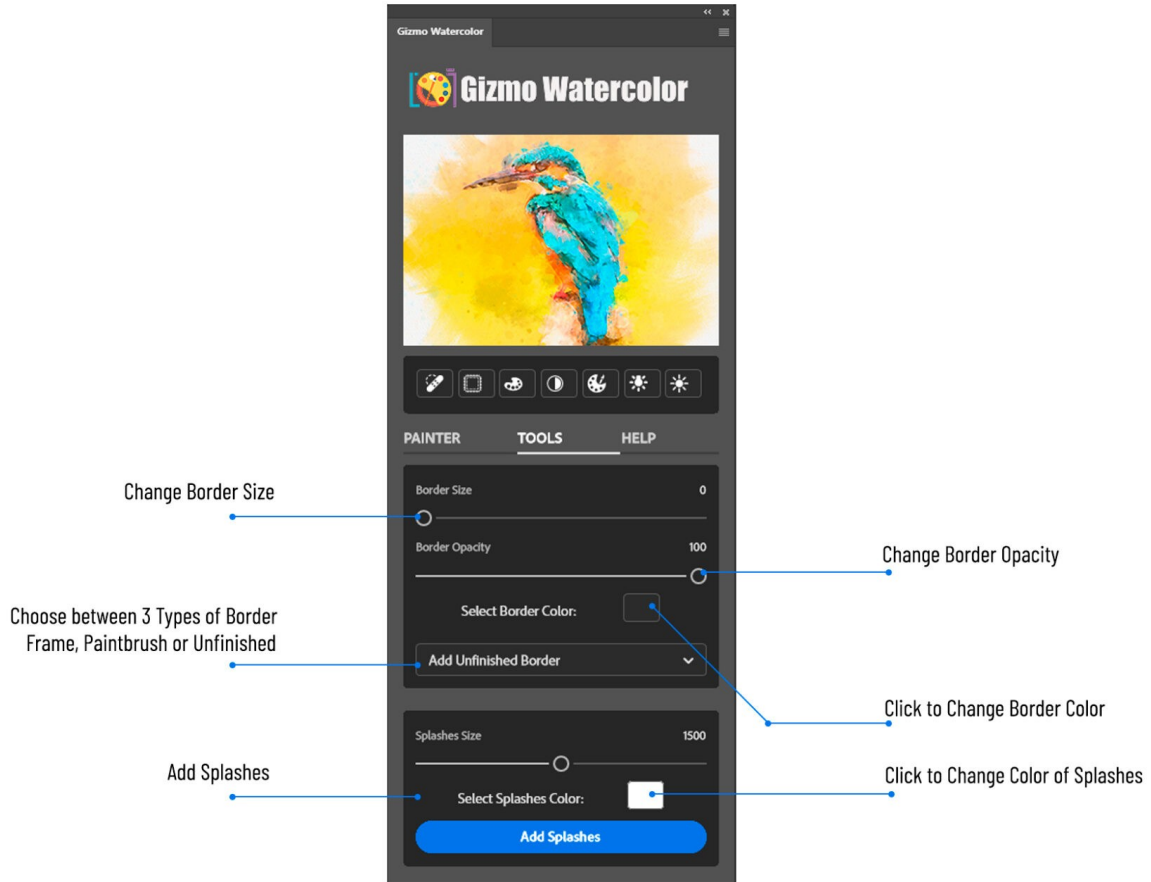
F. WASHED



4. CANVAS TEXTURE SCALING

Determines and defines the size of texture by scaling texture smaller to the left and bigger to the right.

VI. TOOLS TAB



1. BORDER SIZE

Defines and sets border size (width). To make changes, Select to Add Border.

2. BORDER OPACITY

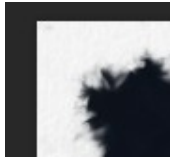
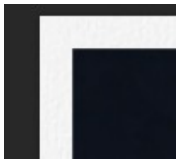
Sets border Opacity. To make changes, Select to Add Border. (**Note:** Not applicable for Unfinished Border.)

3. SELECT BORDER COLOR

Change border color. To make changes or set up a new border, Select to Add Border. (**Note:** Not applicable for Unfinished Border.)

4. SELECT TO ADD BORDER... (TYPE)

A. ADD FRAME BORDER | B. ADD PAINTBRUSH BORDER | C. ADD UNFINISHED BORDER



5. SPLASHES SIZE

Select the size of paint splashes, to give your art a more lifelike painting look. Then select "Add Splashes" button.

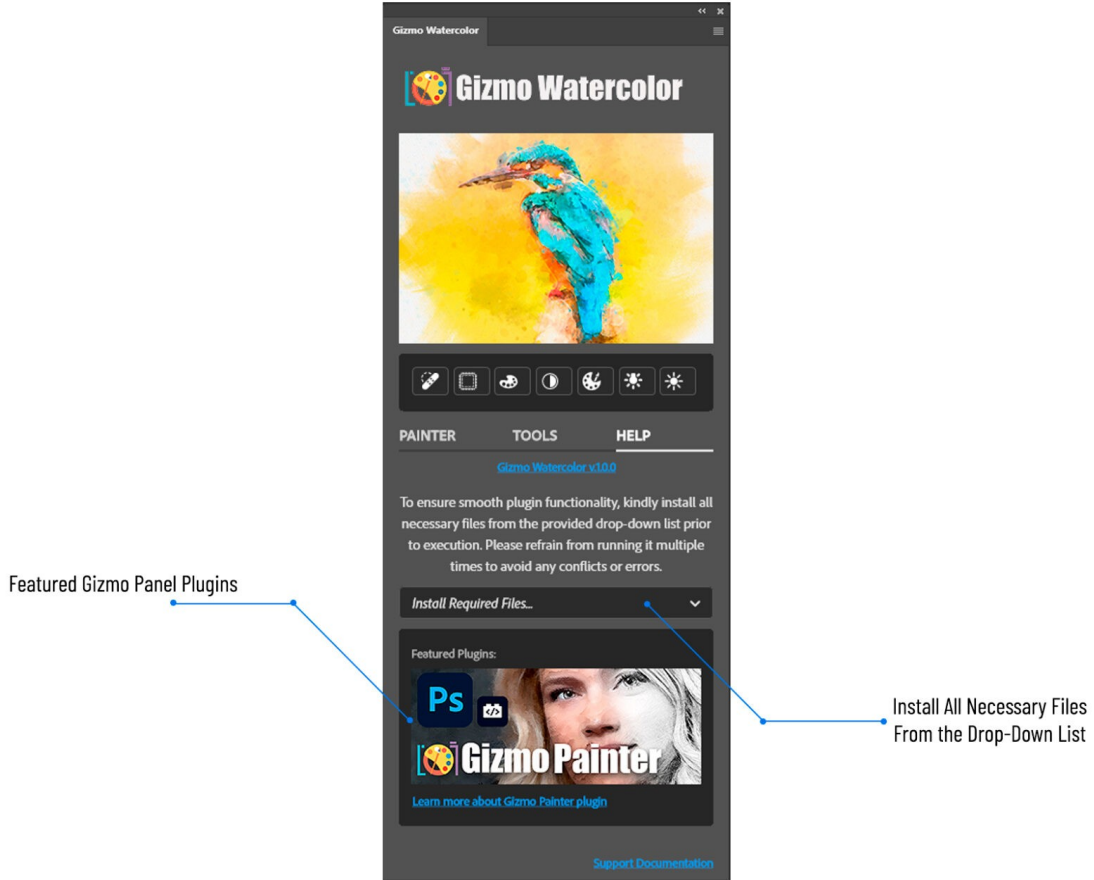
6. SELECT SPLASH COLOR

Select the splash color for your splashes, to give your art a more lifelike painting look. Then select "Add Splashes" button.

7. ADD SPLASHES

Adds the splashes for size and color that the user has selected. If you make the changes to Size or Color of the splash, just press this option again to execute the function. You can fine tune splashes by changing layer opacity.

VII. HELP TAB



1. INSTALL REQUIRED FILES...

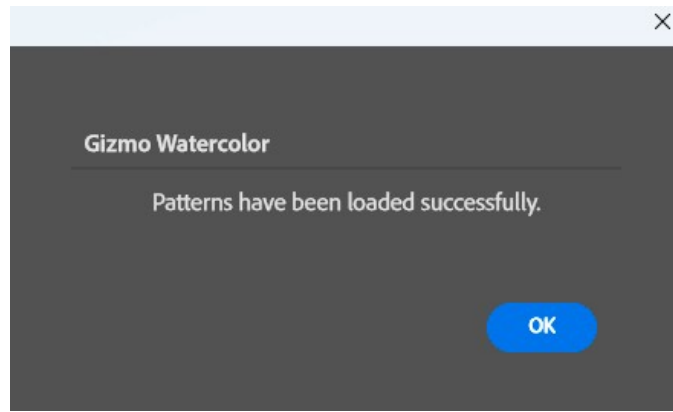
First time installation only, do the following once to get started and have all the required installed and available for Gizmo Watercolor.

A. LOAD REQUIRED PATTERNS

- Load **Gizmo Watercolor** plugin and Open the **HELP** tab.



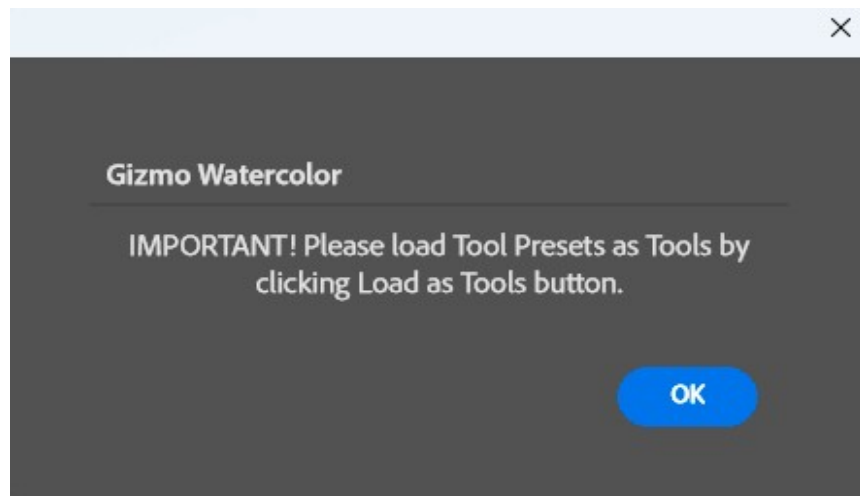
- Select "**Load Required Patterns**" from the drop-down list.
- Once the required patterns are installed, you will receive notification that "Patterns have been loaded successfully."



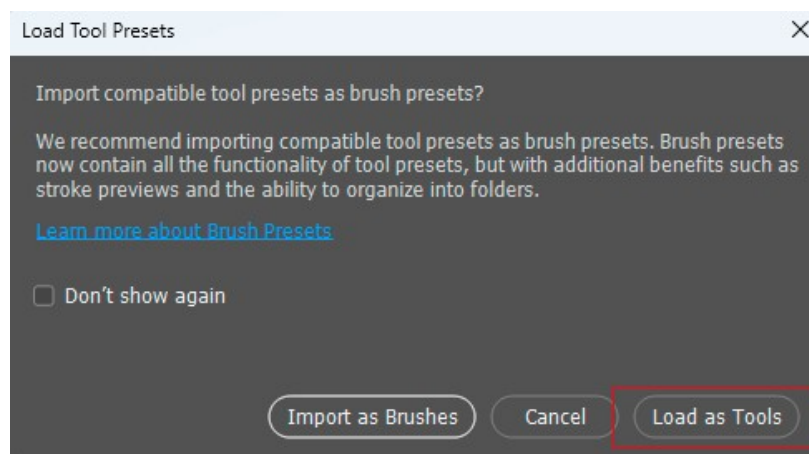
B. LOAD REQUIRED TOOL PRESETS

Just execute once, first time you load and install the painter. If you are reinstalling a newer version of the painter, no need to do this option again. (**Note:** Go to view Tool Presets and unclick Current Tool Only at the bottom of the tool presets panel.)

You will get notification message to load **Tool Presets** as **Tools**. Please click "OK" button to go to the next step.

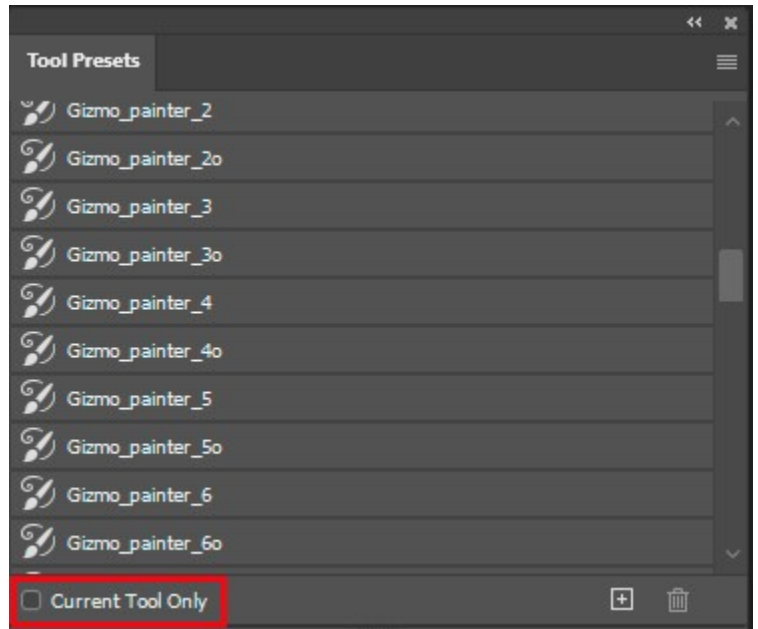
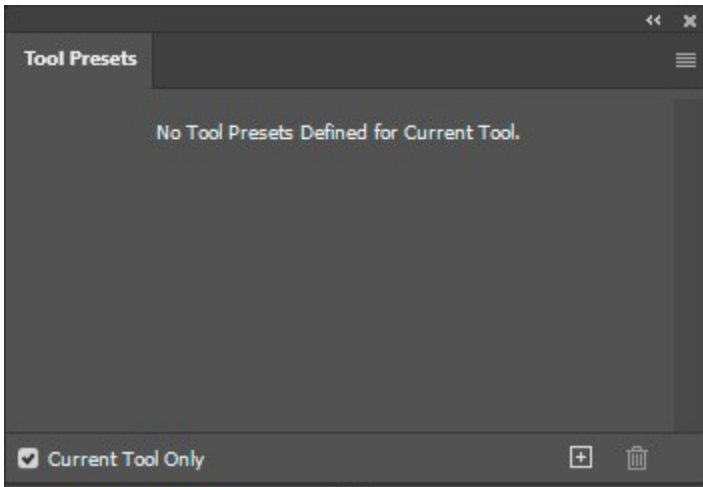


IMPORTANT! Load Tools Presets as Tools by clicking on "**Load as Tools**" button.



Open **Tool Presets** pop-up panel by navigating **Window** -> **Tool Presets** inside **Adobe Photoshop**.

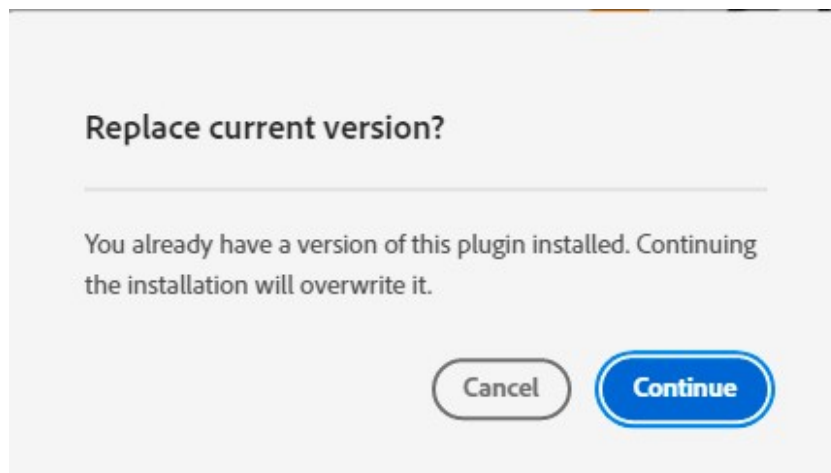
Make sure to uncheck **Current Tool Only** checkbox to display **Gizmo Watercolor Tool Presets**.



2. UPDATING GIZMO WATERCOLOR

The update process follows the same steps as the initial installation: Simply download and double click your updated Gizmo Watercolor plugin. This will launch the Creative Cloud application and prompt you to replace the current version of the plugin. (**Do not** reinstall required files from help tab)

For more information about installing Creative Cloud app extensions or plugins visit Adobe support site: <https://helpx.adobe.com/creative-cloud/kb/troubleshoot-common-addon-installation-issues.html>



3. FEATURED PLUGINS

In this area of the plug in, we will always have all the other plugins, featured and current, that we already have and released, new releases or updates. Please check this tab in all of our plugins for news and updates to new and exciting products that we currently have or about to release.

VIII. INDEX

1. GIZMO WATERCOLOR VERSION CHANGE LOG

Version	Description or Nature of Changes
1.0.0	Initial Version

2. GIZMO WATERCOLOR FREQUENTLY ASKED QUESTIONS (FAQ)